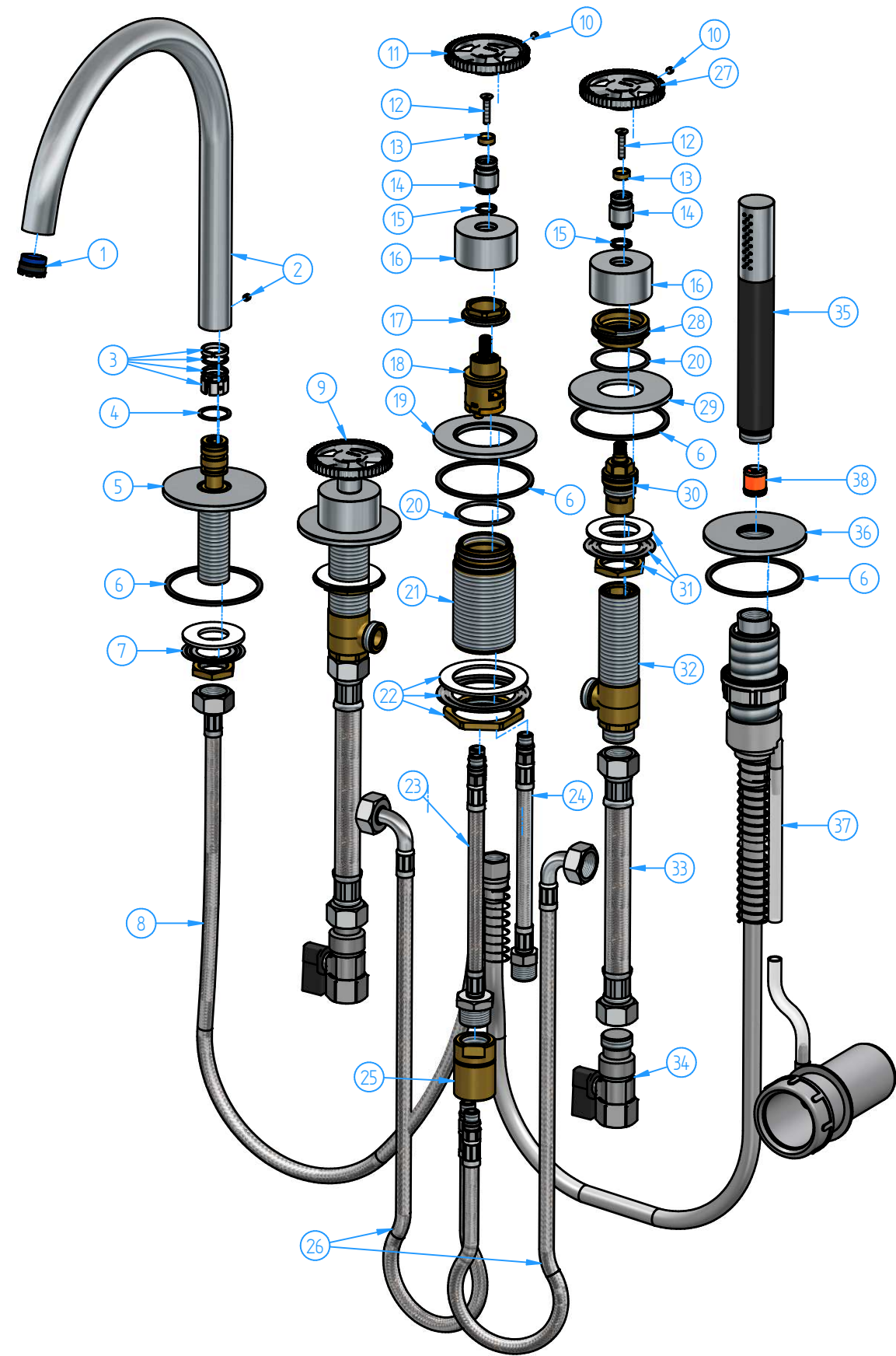


38	M352-002	Check valve CV15-FR with flow regulator 9.0 l/min	1
37	CW072-002	Handshower kit	1
36	CW072-02	Flange for handshower	1
35	M352-00	Handshower	1
34	CW072-004	Filter - check valve tap	2
33	CW072-003	Flesible hose G1/2"-G1/2" DN13 L 400 mm	2
32	CW033-002	Body lateral	2
31	CW033-003	Installation kit for lateral washbasin stand	2
30	CW033-005	1/2" Ceramics headwork 90°	2
29	CB005-16	Wall flange	2
28	CW033-01	Locking nut	2
27	CW033-03	Handle cold	1
26	CW033-004	Flexible hose M10x1-G1/2" L 500 mm	1
25	CW033-006	Connection flexible/spout	1
24	AR073-008	Flexible pipe	1
23	CW072-001	Flexible hose M10x1 - G1/2" Male	1
22	CW023-001	Fixing kit for mixer/diverter	1
21	CW023-003	Mixer/diverter body	1
20	CW023-04	O.Ring 34,59x2.62	3
19	CW023-03	Flange for mixer/diverter	1
18	CB029-001	2-Ways diverter cartridge without shut-off	1
17	CB029-13	Locking nut for diverter cartridge	1
16	CW023-01	Cover	3
15	CW003-07	Teflon ring	3
14	CW003-02	Handle pin	3
13	CW003-06	Insert	3
12	CW003-10	Screw M4x20	3
11	CW072-01	Handle for diverter	1
10	CW003-08	Dowel M4x5	3
9	CW003-01	Handle	1
8	AR073-007	Flexible pipe M10x1-G1/2" L=500 mm	1
7	E001-002	Installation kit	1
6	CB031-05	Gasket	5
5	CW023-002	Spout flange set	1
4	CB004-10	Ring ø21.8xø18.3x1	1
3	CB004-004	Washers jet for CB004 spout	1
2	CB040-001	Spout	1
1	CW072-005	Aerator M18,5x1 with flow regulator 23 l/min	1
ID Number	Code	Description	Pcs



				Sheet	1 of 3
N°		REVIEW	Date	Scale	1:4
Description					Material
Deck-mounted bathtub set, with swivel spout					Weight
					0 kg
Code	Date of issue	Chamfers not quoted		Finishing	hotbath italian bathroomware
CW072-00	19/04/2019	0.5x45°		SM LU CR Grinding Polishing GN	
<small>This drawing is property reserved of Hotbath Srl. Without express authorization, the copying, distribution and utilization of this document as well as the communication to others is prohibited.</small>					